

PTZ Optics Camera Integration

TS Conference



Table of Contents

1. Basics	3
2. Configurations	4
2.1. Camera Attributes	4
2.2. Search Camera	5
2.3. Select Camera	5
2.4. Test Camera Network Connection	6
2.5. Set Camera Preset	7
2.6. Camera Preset Operation	8

1. Basics

The TS Conference system supports camera control via ONVIF protocol. One of the supported cameras is the PTZOptics PT20X-USB. Before adding PTZOptics camera to the TS conference software, make sure the camera is connected to the DHCP server and ONVIF protocol is on.

After physically wiring up the camera and the conference system, please start the software by selecting "Conference System" from "Programs" in the "Start" menu or from the Desktop Shortcut icon.



Enter the below Project Name and Password in the Login box.

Project Name: TOA

Password: admin

Equipment: TS920

A dark-themed dialog box titled "Login" with a close button (X) in the top right corner. It contains four input fields: "Project" with the value "TOA" and a note "(less than 50 characters)", "Password" with masked characters "*****", "Equipment" with a dropdown menu showing "TS920", and "Language" with a dropdown menu showing "English". At the bottom, there are "OK" and "Cancel" buttons.

Project	TOA (less than 50 characters)
Password	*****
Equipment	TS920
Language	English

Please select the File Name Directory, Enter a "Conference Name" and make sure that the Camera option is checked.

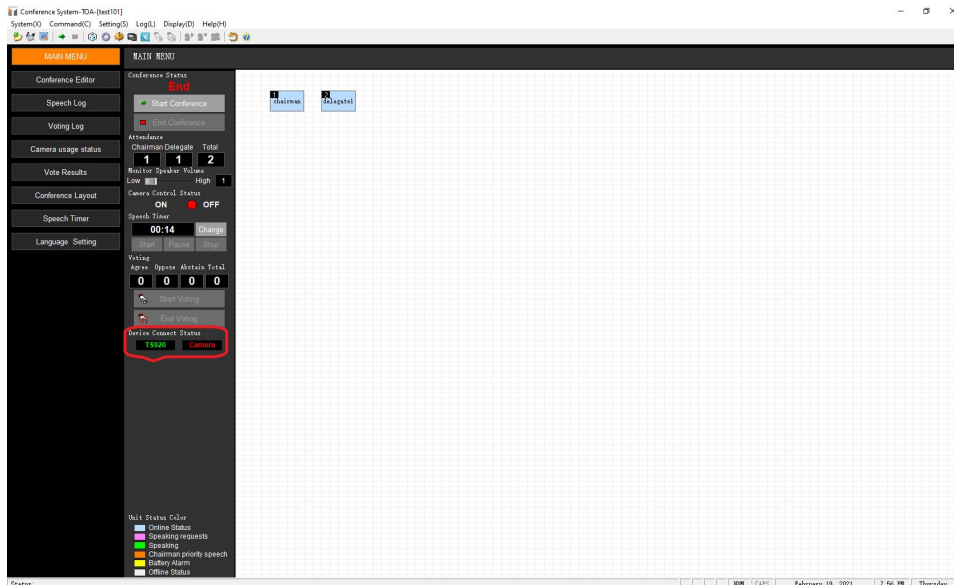
A dark-themed dialog box titled "System Initial Settings". It has several fields: "File Name" with a file browser button and the path "C:\Users\Administrator\Desktop\test101.icm"; "Conference Name" with the value "test101"; "Conference Count" with the value "2"; a checked checkbox for "Camera"; and a radio button for "ONVIF Internet Camera" under "Camera Communication Type". Below these is a "Camera List" table with columns: Check, Name, Address number, Control Mode, Pointing unit range, and Remarks. The table is currently empty. There are "OK" and "Cancel" buttons at the bottom right.

File Name:	C:\Users\Administrator\Desktop\test101.icm
Conference Name:	test101
Conference Count:	2
Camera	<input checked="" type="checkbox"/>
Camera Communication Type:	<input checked="" type="radio"/> ONVIF Internet Camera

Check	Name	Address number	Control Mode	Pointing unit range	Remarks
-------	------	----------------	--------------	---------------------	---------

As highlighted in the red circle below, the green and red LED indicators show the status on whether the devices are connected or not.

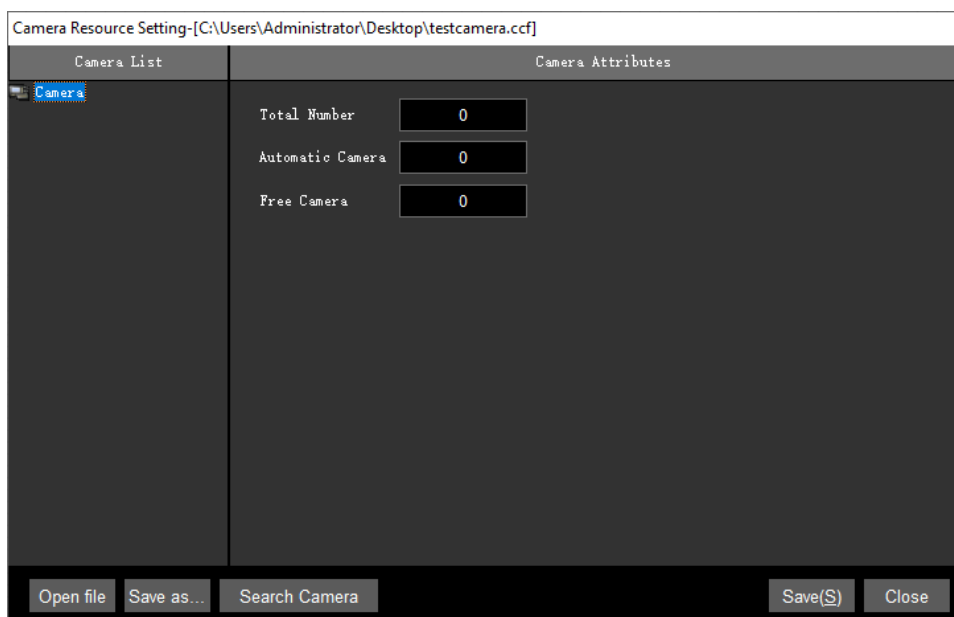
Red means that the camera is not connected or added. If you are experiencing this, please follow these steps to add a camera.



2. Configurations

2.1. Camera Attributes

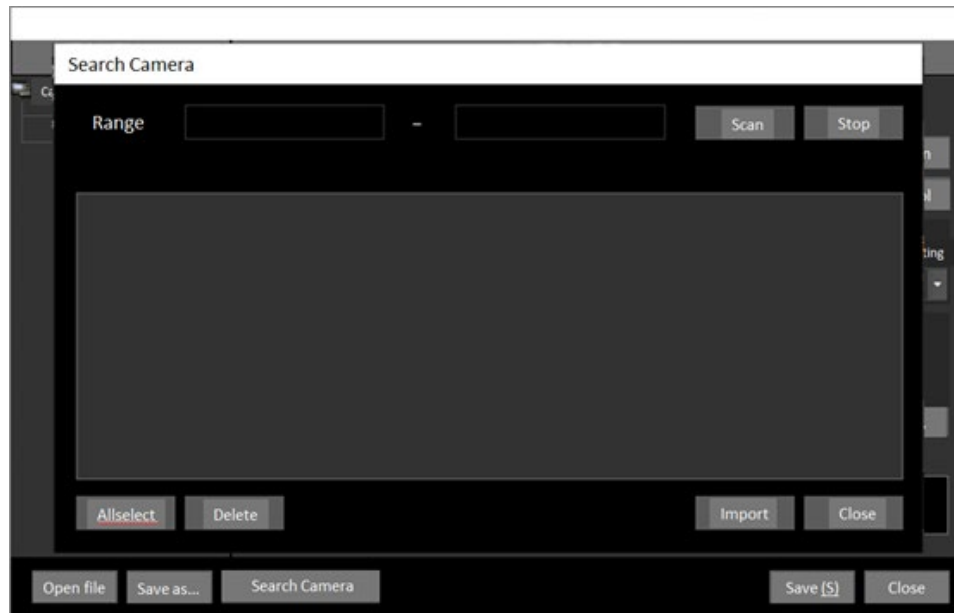
To add a camera to the list of cameras, simply click on the camera icon in the tree on the left side of the screen, then right-click and select the “increase” option in the pop-up menu. If you are in the same network, then you can automatically add a camera configuration or, the user can select the "increase from File" option, and select the camera profile to add to the list.



2.2. Search Camera

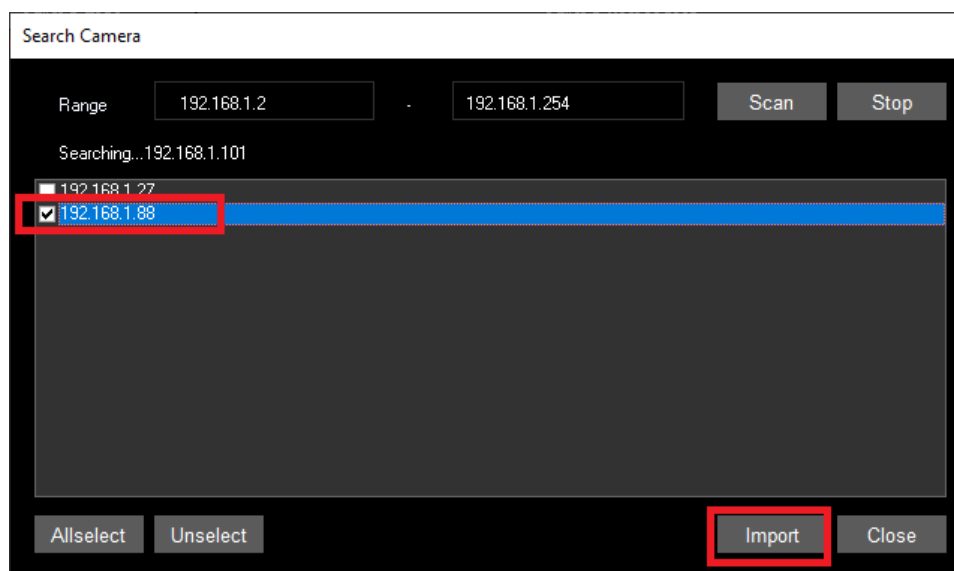
Click [Search Camera], the search camera interface appears. Enter an IP address range, and then click [Scan].

Please note that if a camera has been used in the configuration, it is not possible to import another one with the same IP address.

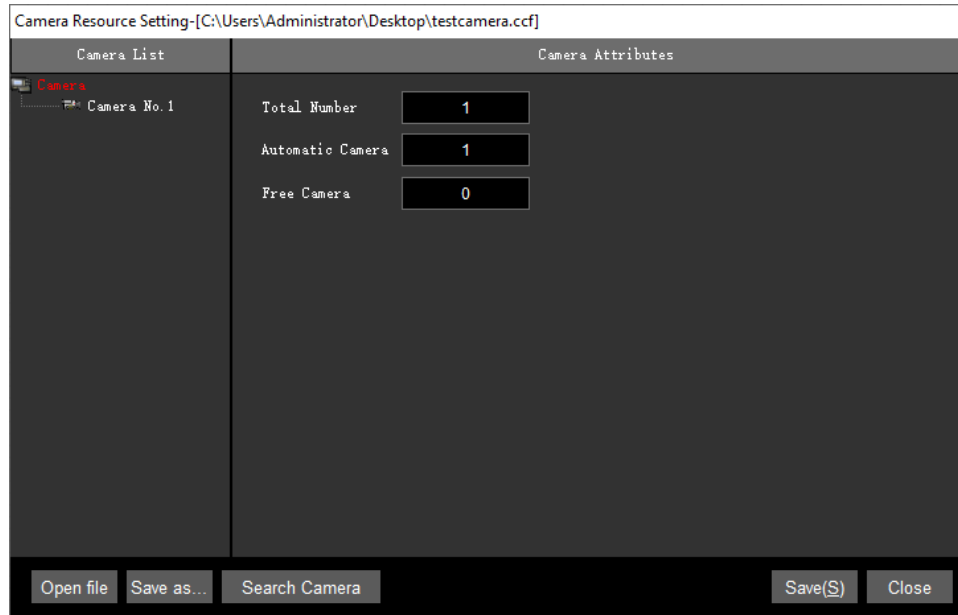


2.3. Select Camera

When scan is complete, the software will locate all IP devices within the selected range. Select the IP address of the camera and click "Import" to add the selected camera into the TS conference software.



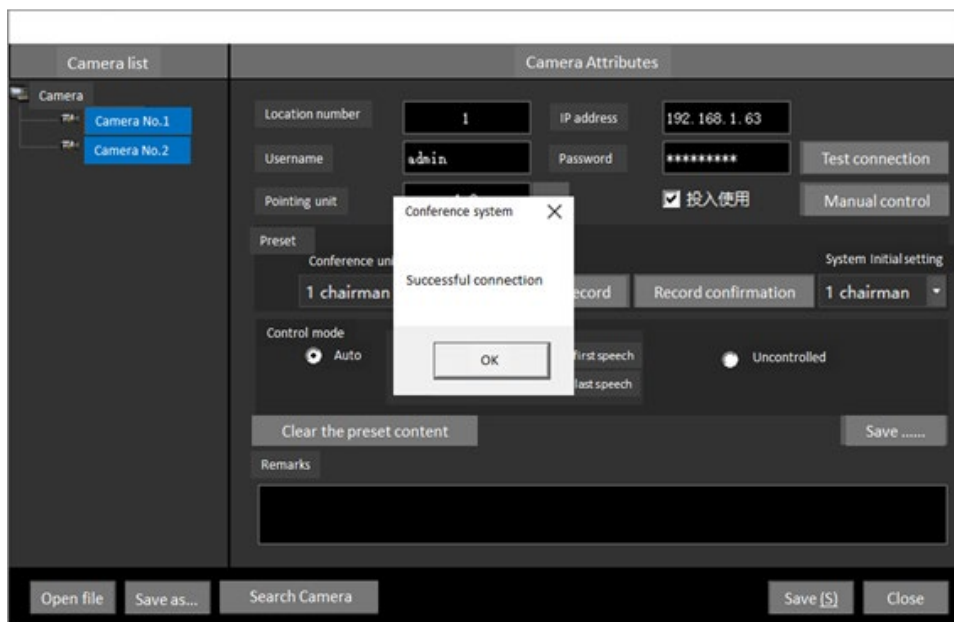
Once imported, the camera is added to the tree in the Camera List on the left side, and the total number of cameras will increase by one.



2.4. Test Camera Network Connection

The valid address number of the camera ranges from 1 to 999, and the user sets it according to the address of the live camera.

To test communication: Input the IP address of PTZOptics camera, the ONVIF username and password, and finally click on [Test Connection] to test link to the PTZOptics camera, as indicated in the example below:



2.5. Set Camera Preset

Select the conference units you want to camera to point to by clicking the [three dots] on the right side of the “Pointing Unit” option. In this example, we selected both the Chairman unit (ID #1) and the delegate unit (ID #2).

Next step is configuring the preset position for each conference unit.

First, select a conference unit to be considered as default where the camera will point to in default situations, from the drop-down list. The selected conference unit will become the default position of the camera when the camera is idle.

Second, select the first conference unit from the drop-down menu as showed below (Chairman Unit in this example), click [Manual Control] to adjust the camera to the corresponding position, and then click the [Record] button. The position will be saved in the camera's memory. Repeat the same for all conference units.

Please note that it is recommended to connect the camera to a monitor via an HDMI cable, to preview the live feed and adjust the camera position properly (Pan, Tilt and Zoom).

The user can choose the tracking mode of the camera or give up tracking as needed:

- Select [Track the first speech] to follow the first speaker until the end of the speech.
- Select [Track the last speech] to follow the last speaker.
- Select [Uncontrolled] to stop tracking.

Finally, to save the configuration, click [Save(S)]. To close the window, click [Close].

The screenshot shows a software window titled "Camera Resource Setting-[C:\Users\Administrator\Desktop\testcamera.ccf]". The window is divided into two main sections: "Camera List" on the left and "Camera Attributes" on the right.

Camera List: Shows "Camera No. 1".

Camera Attributes:

- Address number: 1
- IP address: 192.168.1.88
- Username: admin
- Password: *****
- Pointing unit: 1,2 (with a dropdown arrow)
- Buttons: Test connection, Manual Control
- Checkbox: Put into use (checked)

Preset Section:

Conference unit	Status	Record	Record confirmation	Default location
1 chairman	Not recorded	Record	Record confirmation	

Below the table, there are radio buttons for tracking modes: Auto, Track the first speech, Track the last speech, and Uncontrolled.

Buttons: Clear the preset content, Save...

Remarks: (Empty text area)

Bottom Bar: Open file, Save as..., Search Camera, Save(S), Close

2.6. Camera Preset Operation

When the “Camera Setting” window is closed, click [Start Conference] to start the conference.

As shown below, the default position of the camera is on the Chairman unit (1). Once the Push-To-Talk button on the delegate unit is pressed, the camera icon will jump to the delegate unit (2) and will turn green to show the delegate unit is speaking. After the button is released, the camera icon will return to the default position (Chairman Unit (1) in this example).

At the end of the conference, click [End Conference] to end the conference session.

